




Tait
SATHORN 12

LIVE THE ICONIC LIFE

Project: Tait Sathorn 12 | Location: Land Title Deed No. 5951, 5952, 5375, 13562, 33781, 35915, 35916, 39524, 41090, 41091, 48958, Soi Sathorn 12, North-Sathorn Road, Silom, Bangrak, Bangkok | Project's Area: 1 Rai 3 Ngan 22.6 sq. wah (2,890.4 sq.m) | Type of Building: A 39-storey residential condominium building (3 basements) with a total of 231 units | Construction Permit No. Yor Phor 4 No. 24/2563 | Construction Starts: Q1 (AD 2020) | Expected Completion: Q3 (AD 2023) | Encumbrance on Land and Building: The Land and Building are under mortgaged with the bank | Project Owner: Raimon Land Sathorn Co., Ltd. | Head Office: No.3 Rajanakarn Building, 19th floor, South-Sathorn Road, Yannawa Sub-district, Bangkok 10120 | Registered Capital: \$47,370,000 Baht (fully paid-up) | The completed building will be registered as a condominium under the laws on condominium upon completion thereof | All unit co-owners shall have duty to pay sinking fund, common area maintenance fee, taxes (if any) and expenses as provided under the laws on condominium.

An aerial, high-angle view of a dense urban landscape, likely a city center. The image is dominated by numerous tall, modern skyscrapers with glass and steel facades. The buildings are packed closely together, creating a complex pattern of vertical lines and varying heights. The lighting is somewhat dim, suggesting either early morning or late afternoon, with some buildings reflecting light. The overall tone is dark and sophisticated.

Be the first to claim your living space
at the most distinctive lifestyle condominium
in the heart of Sathorn.

An oasis of inspiration in the heart of Sathorn

Inspiration gets lost in an increasingly fast-paced world we live in... This drives us to create TAIT SATHORN 12, an oasis of inspiration for people who never stop seeking for new success; people who are always on a mission; people who are filled with passion and joy in everything that they do; people whose creations become aspirations for others.



“Inspiration is everywhere”

This is what TAIT SATHORN 12 is about,
the most distinctive condominium in the heart of Sathorn.
Nestling amidst urban lifestyle offerings, where every morning
is fueled with new motivations for success.



The new experiences that will redefine your passion

Sathorn isn't merely a thriving business district,
but a hub of inspirations. TAIT SATHORN 12's perfect location
in the epicenter lets you explore the diverse nationalities,
cultures and experiences that will redefine
your passion and capture your inspiration.



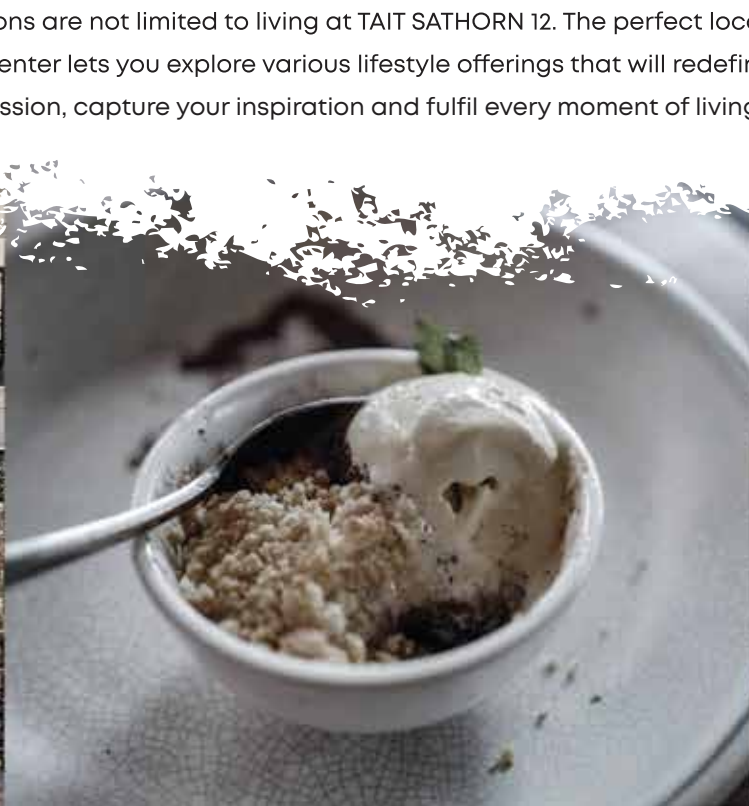
Invigorating facilities zone specially designed for the ultimate relaxation

If inspiration is the air that we breathe, every second at TAIT SATHORN 12 will be an inspired one. Starting from the green space that embraces you, the invigorating energy zone with facilities to reenergize and relax, and the breathtaking panoramic views of the city that provide another level of unparalleled living.



A life surrounded by inspirations

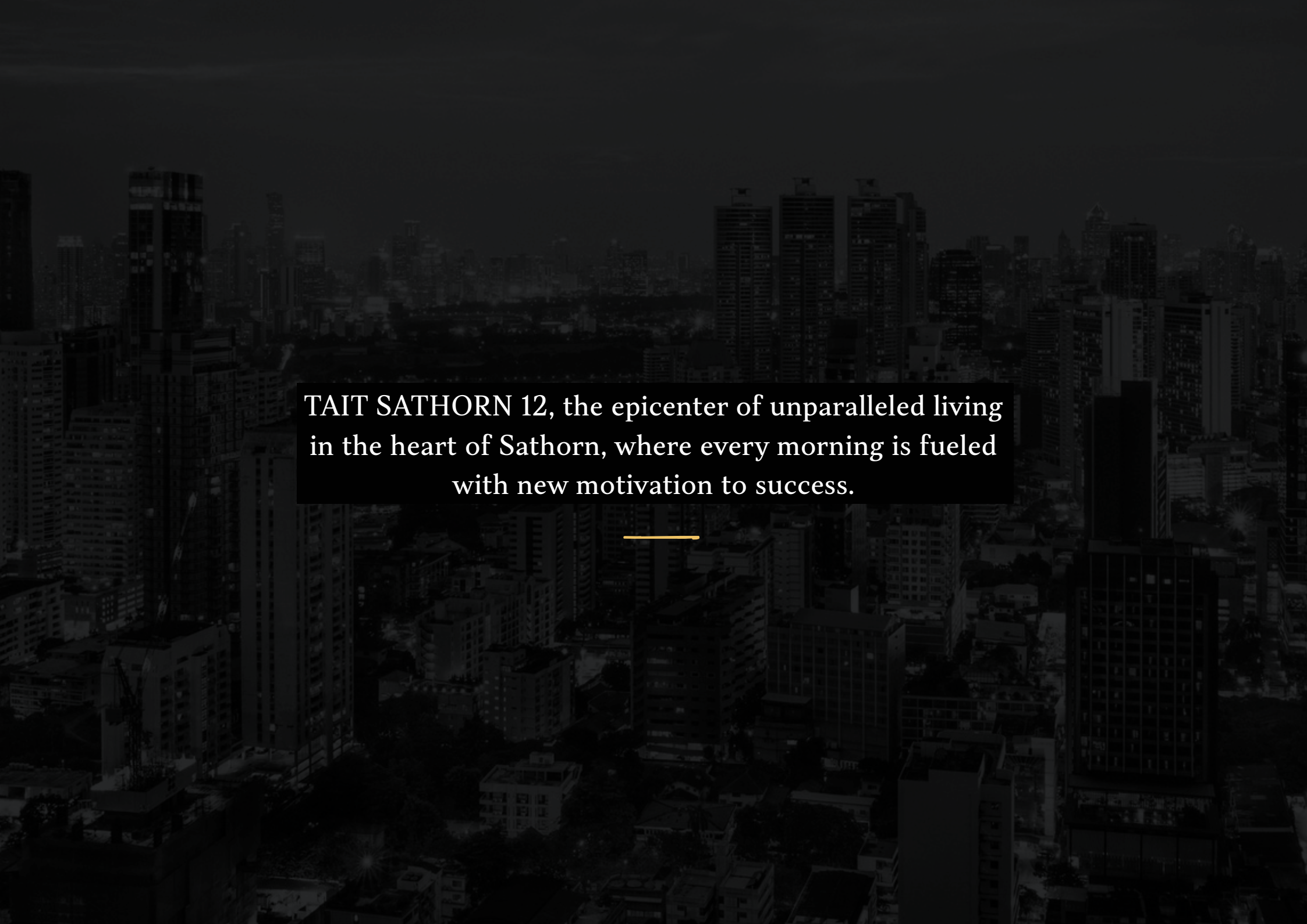
Inspirations are not limited to living at TAIT SATHORN 12. The perfect location in the epicenter lets you explore various lifestyle offerings that will redefine your passion, capture your inspiration and fulfil every moment of living.



International
lifestyle
scene



Core central
business
district

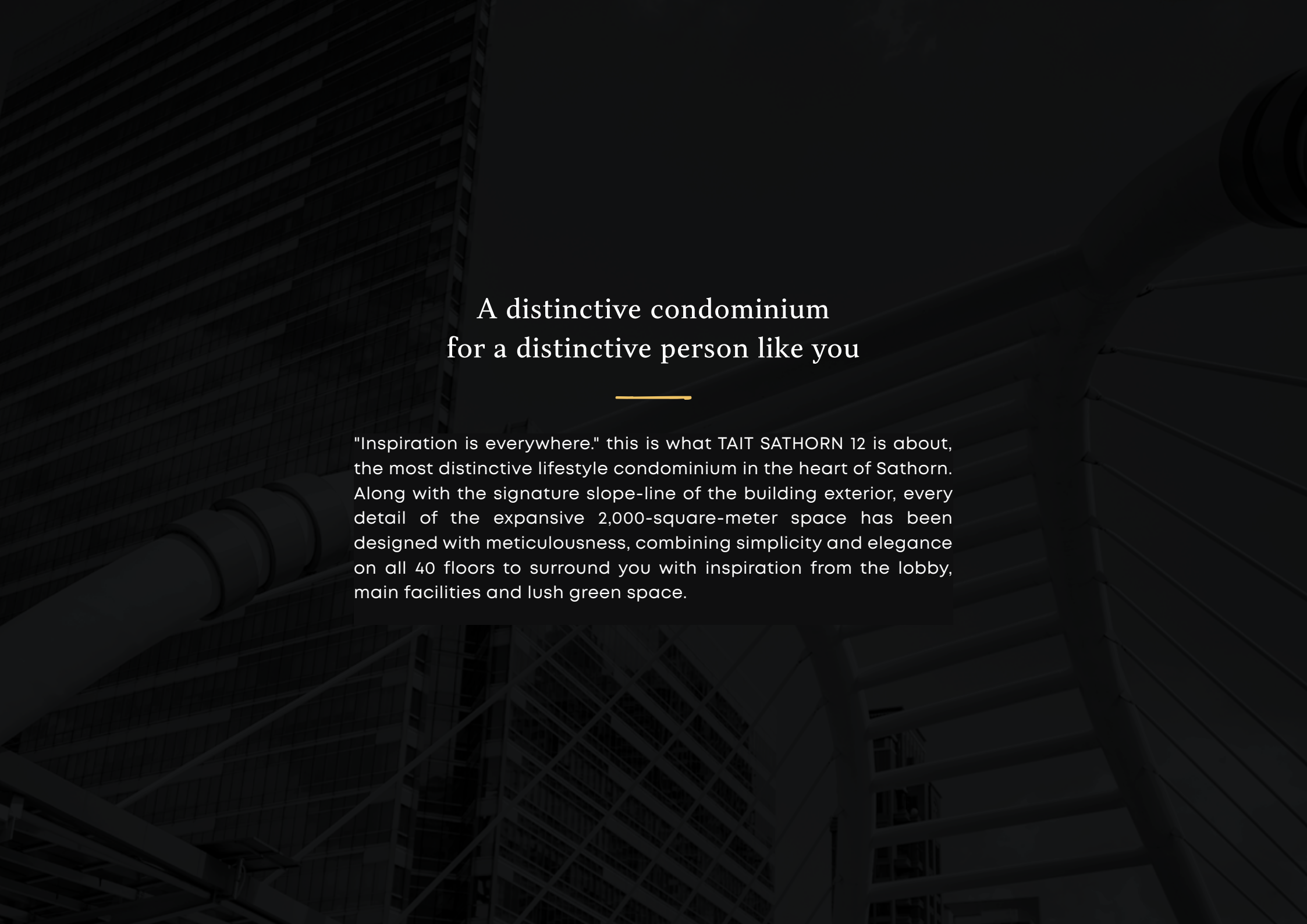


TAIT SATHORN 12, the epicenter of unparalleled living
in the heart of Sathorn, where every morning is fueled
with new motivation to success.

Location

Sathorn Soi 12 just keeps
on getting better.
Various restaurants and
a lot more springing up.





A distinctive condominium for a distinctive person like you

"Inspiration is everywhere." this is what TAIT SATHORN 12 is about, the most distinctive lifestyle condominium in the heart of Sathorn. Along with the signature slope-line of the building exterior, every detail of the expansive 2,000-square-meter space has been designed with meticulousness, combining simplicity and elegance on all 40 floors to surround you with inspiration from the lobby, main facilities and lush green space.



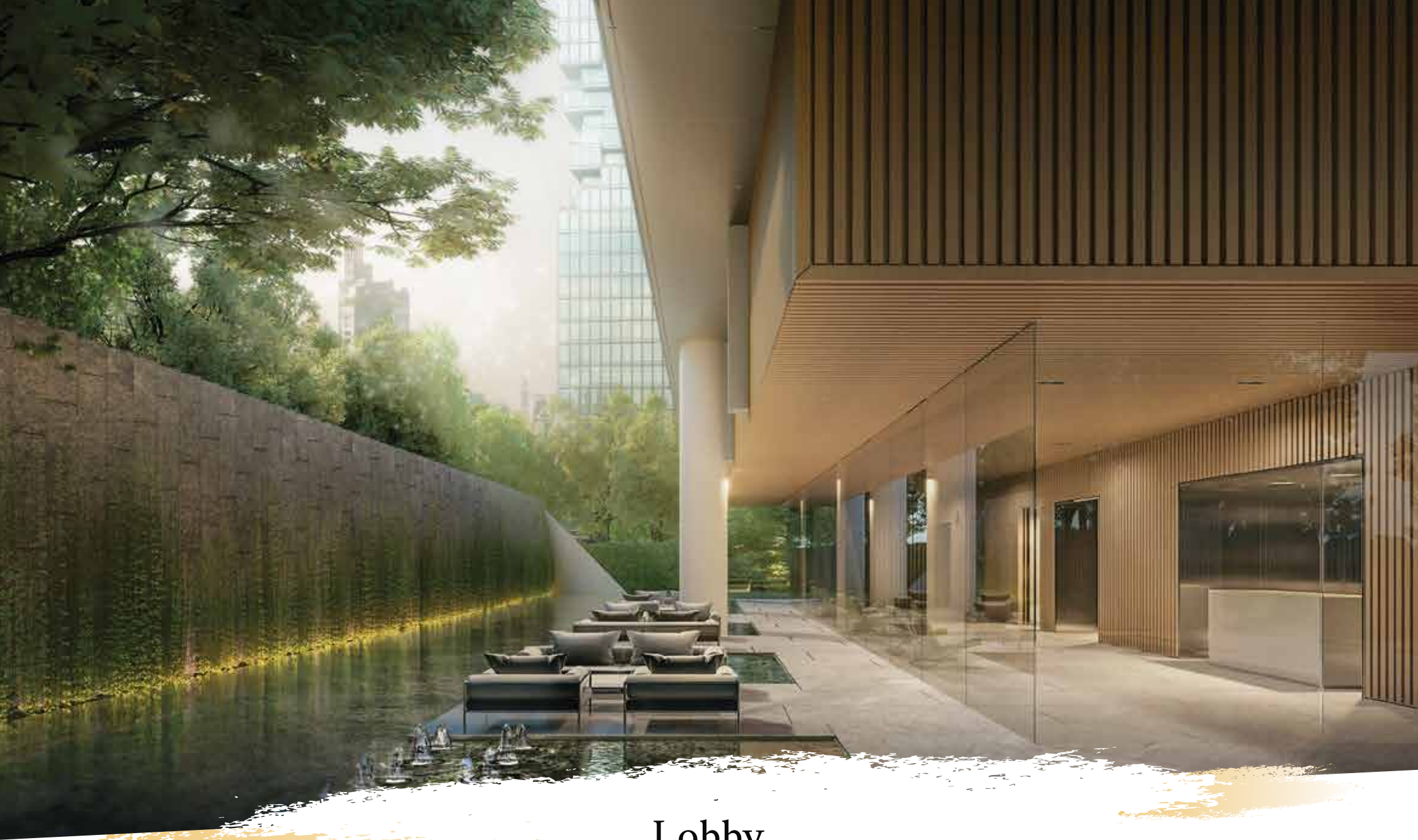
Garden Entrance

Garden entrance with covered vehicle drop-off



Double Height Space Welcoming Entrance

Double volume ceiling main entrance



Lobby

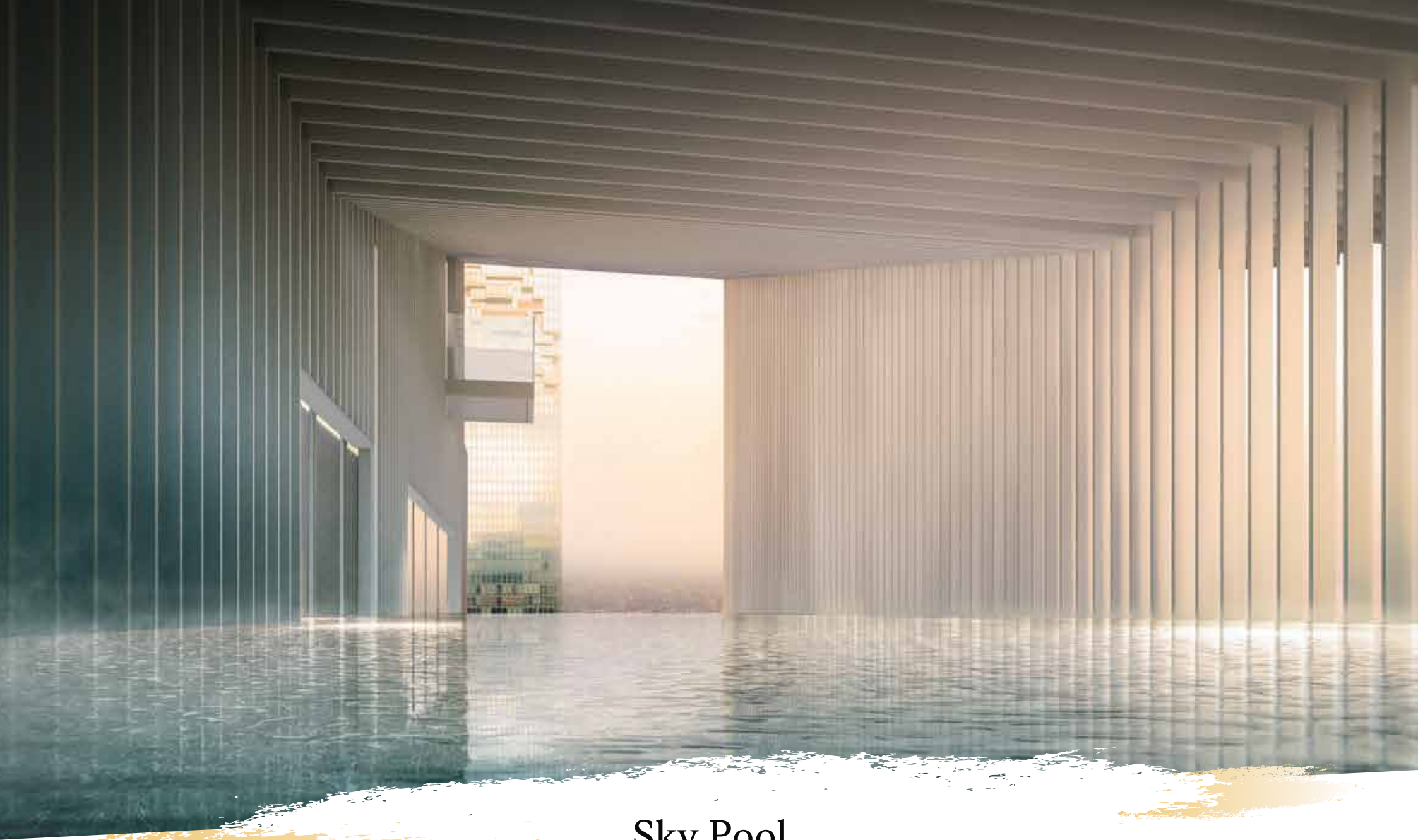
Lobby with outdoor patio and landscape

The Invigorating Crown Jewel Zone

is equipped with state-of-the-art facilities amidst breathtaking panoramic views of the city. Every space is connected in one seamless flow, so the residents can build relationships and exchange their creativity:

- Gym - dedicated high energy zone for functional training and private studio.
 - Cavern pool - **calmness** and serenity surrounds you as if swimming in a cavern.
 - Sky terrace garden - **perfect** for small gatherings with friends and families.
 - Multi-function / **private** dining area catered to the residences with stunning view of Bangkok's skyline.
-

And much more to endlessly inspire you.

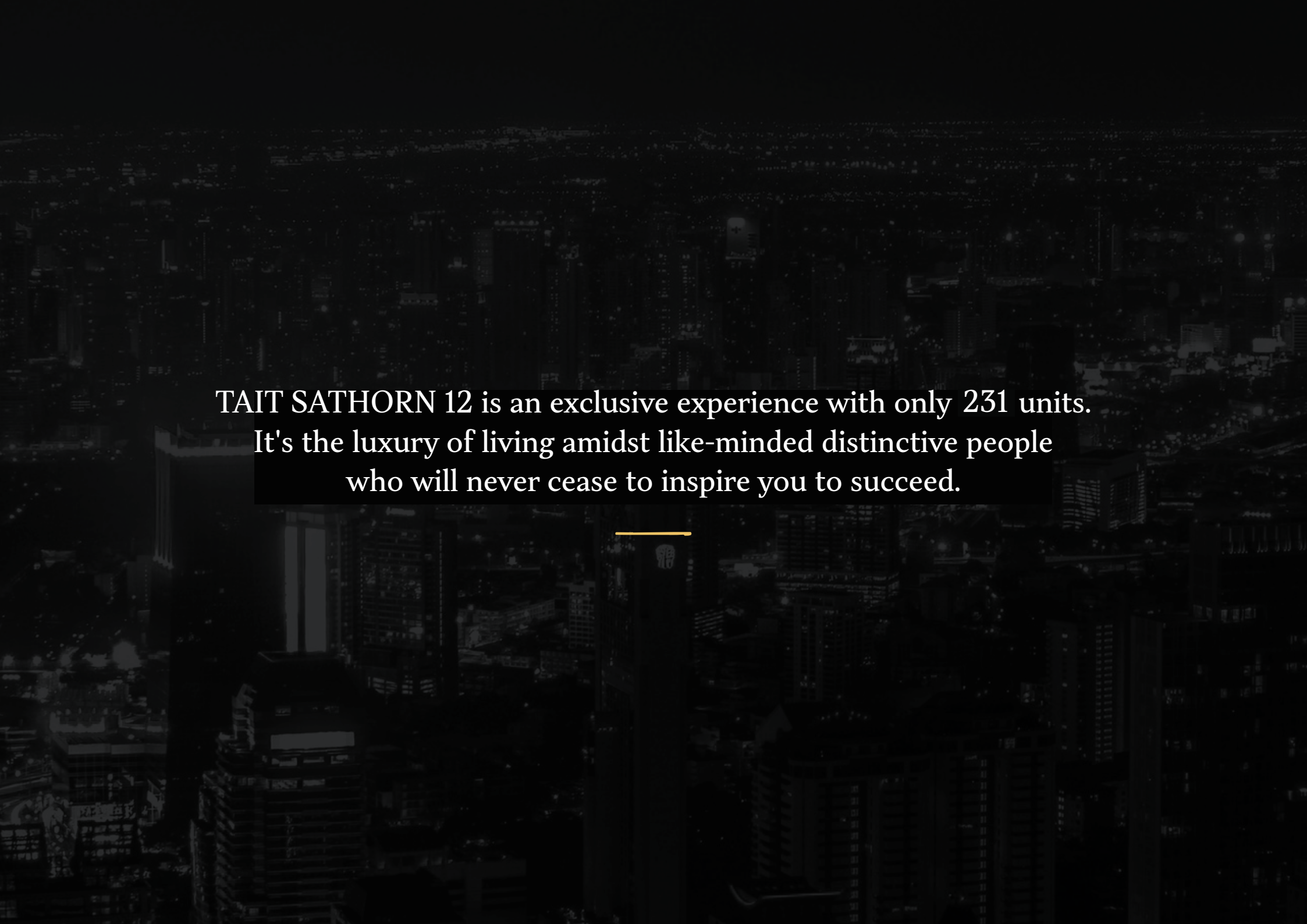


Sky Pool

Infinite edge non-chlorine filtration system pool with children's pool



Amphitheater Lounge

An aerial night view of a city skyline, likely Bangkok, with numerous illuminated skyscrapers and buildings. A semi-transparent dark rectangular box is centered over the image, containing white text. A small horizontal yellow line is positioned below the text box.

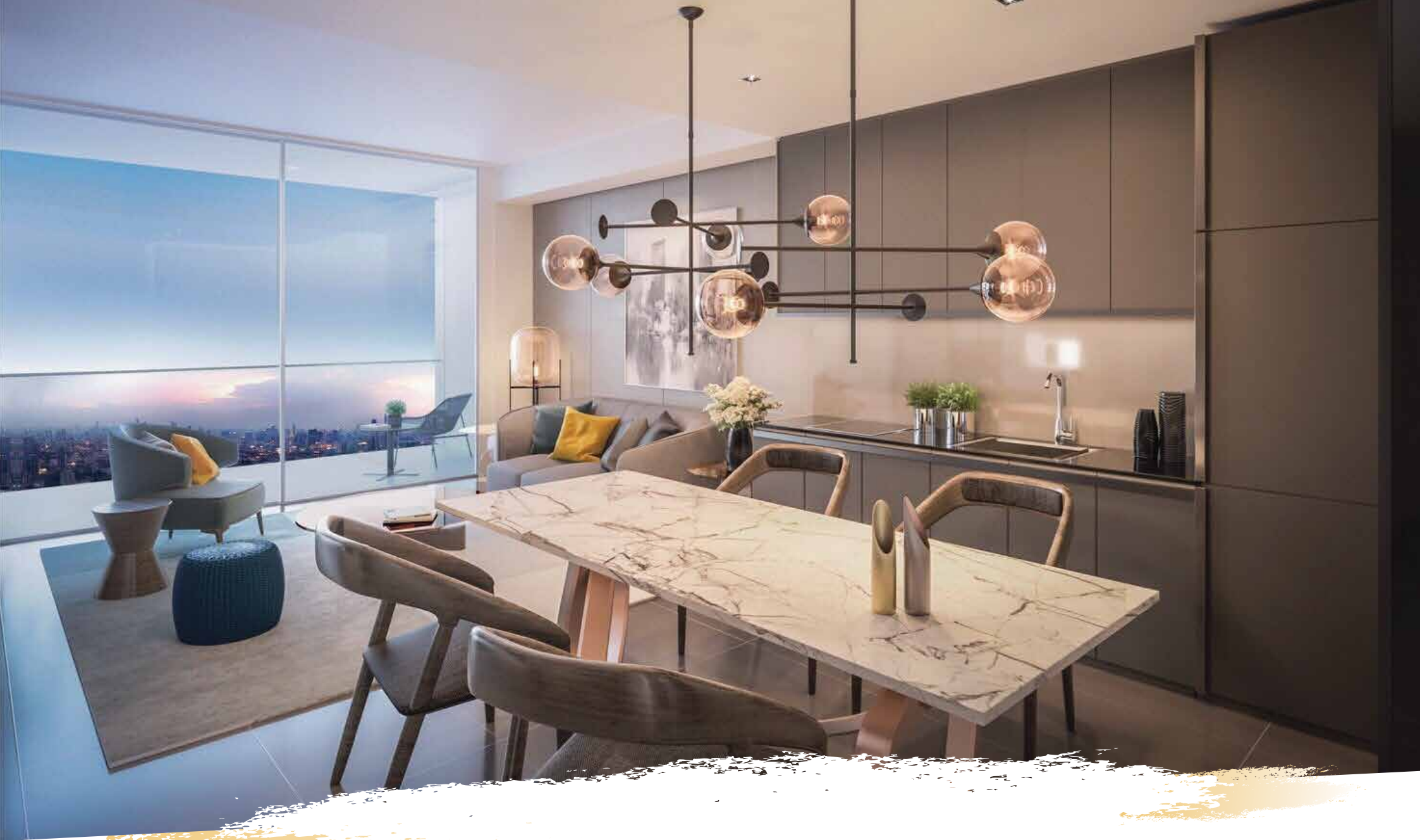
TAIT SATHORN 12 is an exclusive experience with only 231 units.
It's the luxury of living amidst like-minded distinctive people
who will never cease to inspire you to succeed.



Simulated Interior Impression

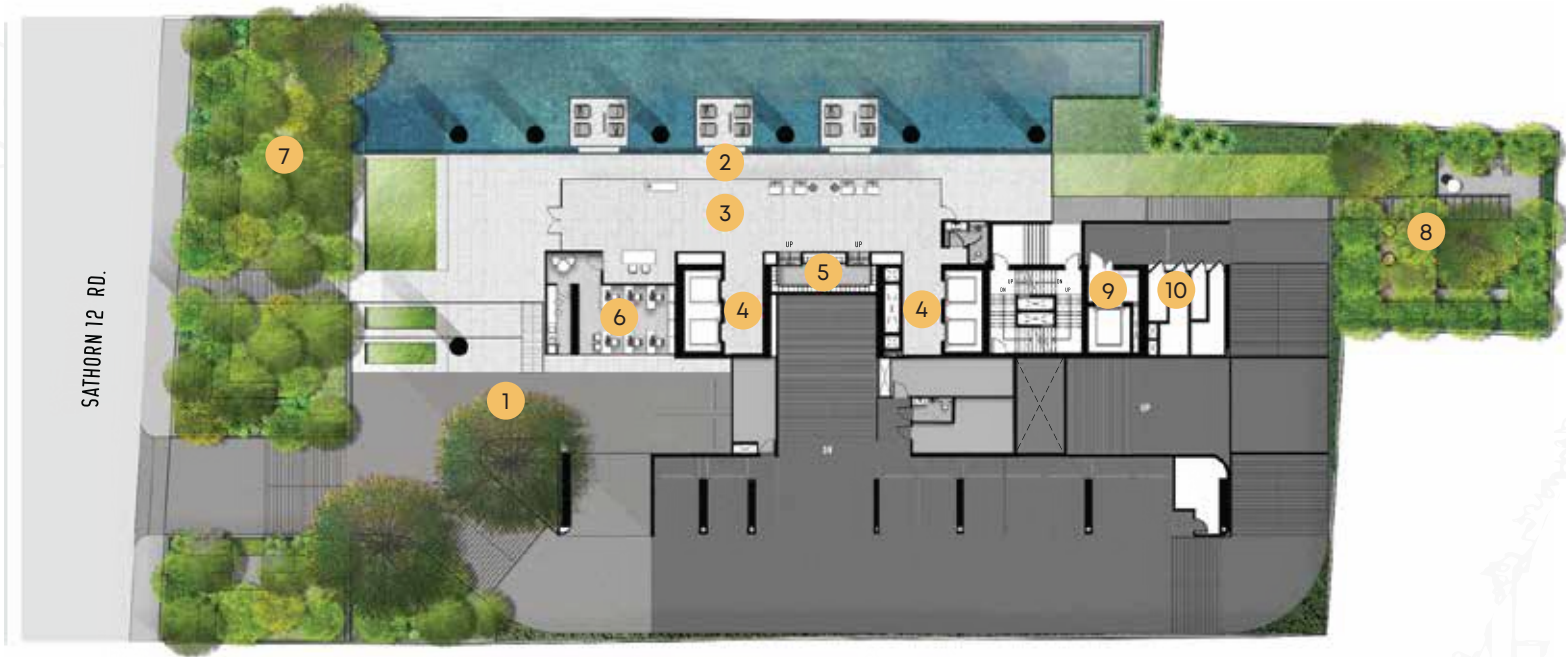


Simulated Interior Impression

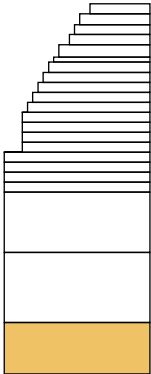


Simulated Interior Impression

Master Plan



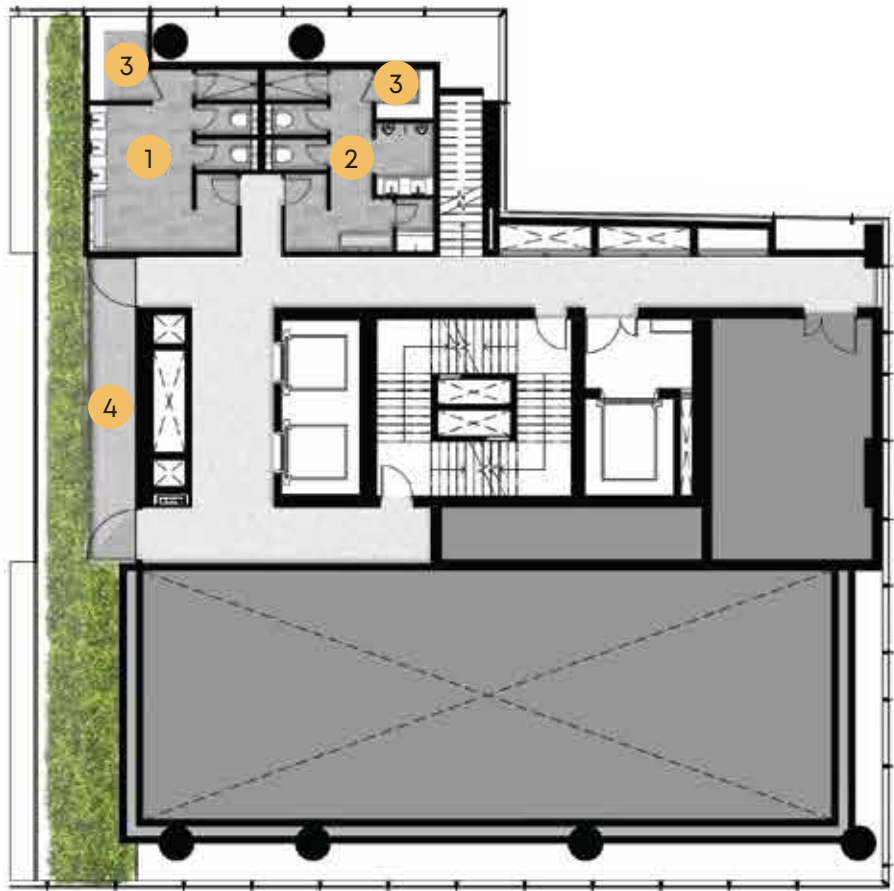
Ground Floor



- 1. DROP-OFF
- 2. OUTDOOR LOBBY
- 3. INDOOR LOBBY
- 4. LIFT LOBBY
- 5. MAILROOM
- 6. JURISTIC ROOM
- 7. GARDEN
- 8. PET LAWN
- 9. SERVICE LIFT
- 10. GARBAGE ROOM

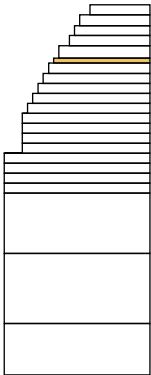


Master Plan



Facilities Floor

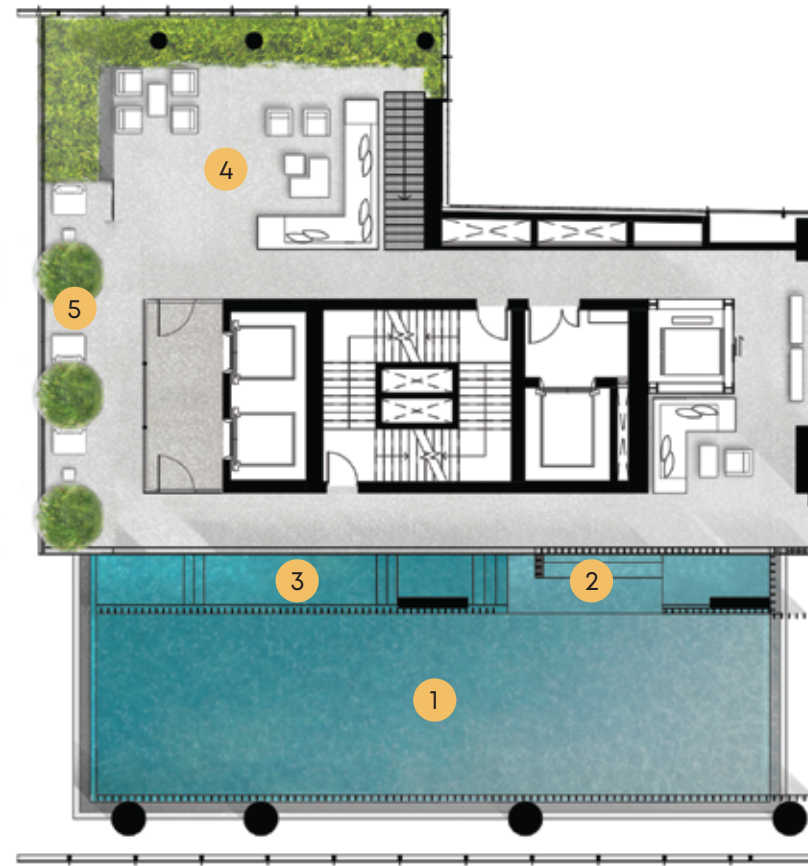
35th



- 1. WOMEN'S TOILET
- 2. MEN'S TOILET
- 3. STEAM ROOM
- 4. SKY GARDEN

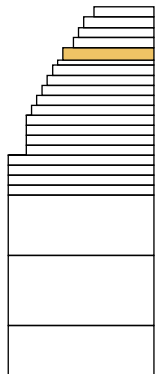


Master Plan



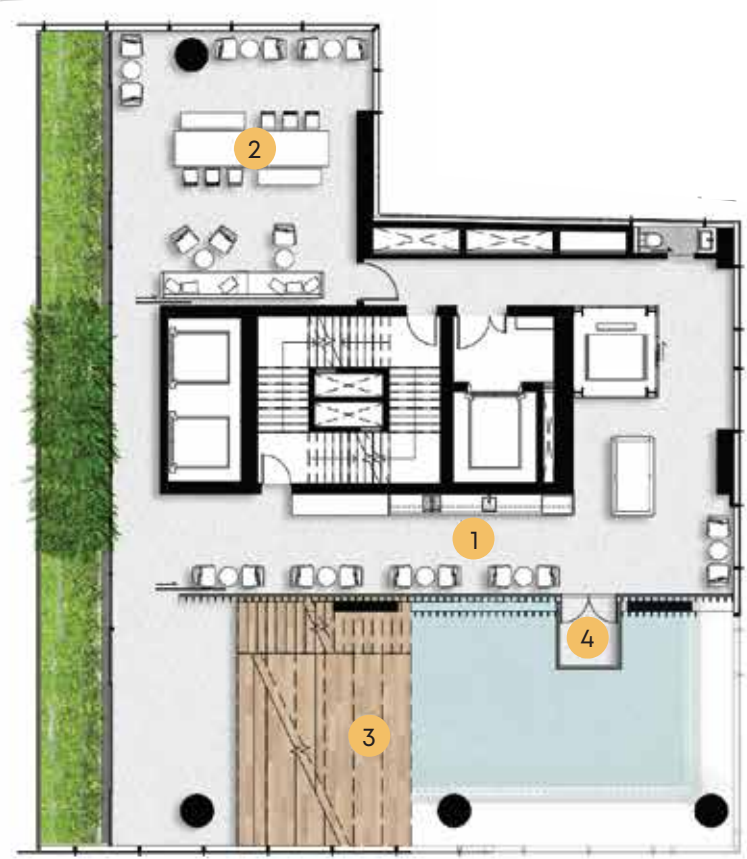
Facilities Floor

36th



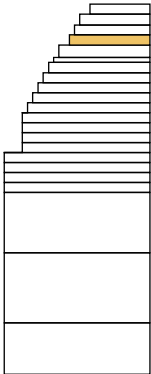
1. SWIMMING POOL
2. JACUZZI
3. KID'S POOL
4. SKY DECK
5. CABANA





Facilities Floor

37th



- 1. SKY LOUNGE
- 2. LIBRARY & STUDY AREA
- 3. AMPHITHEATER
- 4. CAVERN VIEW POINT

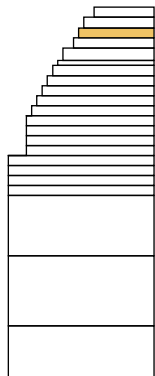


Master Plan



Facilities Floor

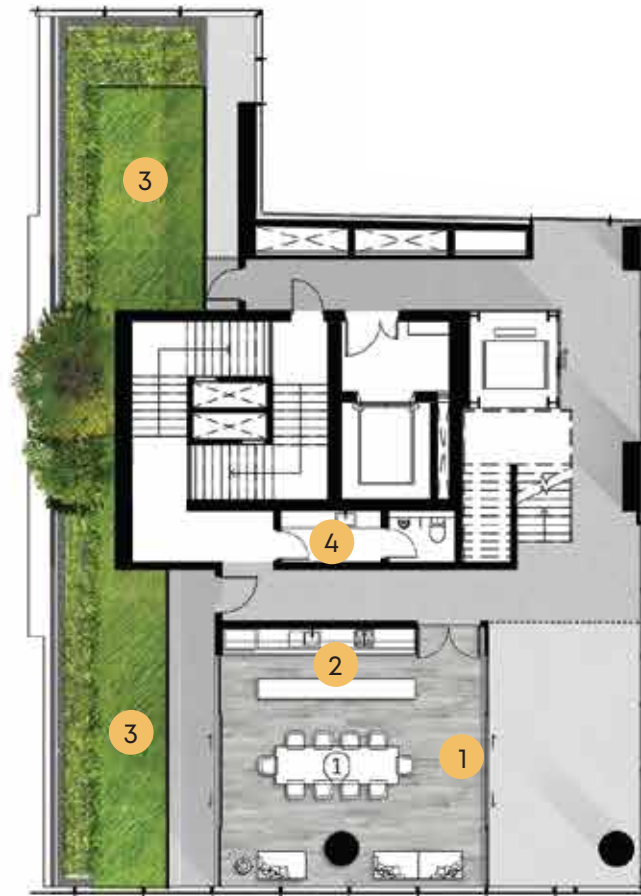
38th



- 1. SKY GYM
- 2. FUNCTIONAL TRAINING
- 3. MULTI-PURPOSE GYM STUDIO
- 4. SKY GARDEN

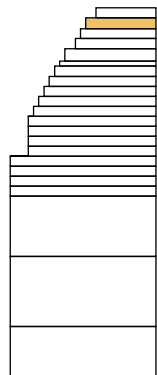


Master Plan



Facilities Floor

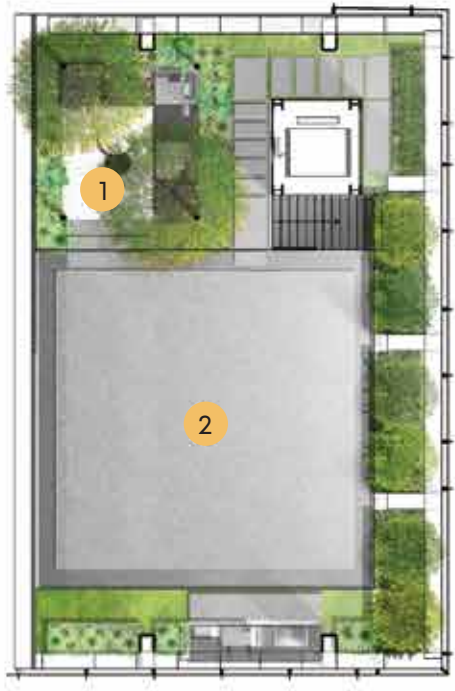
39th



- 1. PRIVATE DINING
- 2. PANTRY & WINE CELLAR
- 3. SKY GARDEN
- 4. WC

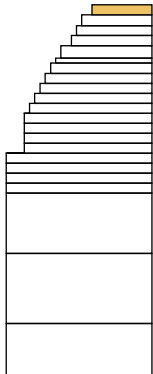


Master Plan



Facilities Floor

RF



- 1. PAVILION
- 2. ROOF OPEN AREA





A life surrounded by inspirations

TAIT SATHORN 12 inspires beyond.

The perfect location in the epicenter lets you explore various lifestyle offerings that will redefine your passion, capture your inspiration and fulfil every moment of living.

Development Name: TAIT SATHORN 12

Developer: Raimon Land Sathorn Co., Ltd.

Product Type: Freehold Residential Condominium

No. of Storeys 40 Storeys

Consultants: Project Architect: A49 Ltd.
Interior Designer: IA49, Ltd.
Landscape Designer: SHMA Co., Ltd.
Structural Engineer: AE49 Ltd.
M&E Engineer: ME49 Ltd.

Total Land Area: 1-3-22.6 Rai (2,890.4 sqm.)

Total Number of Units: Approx. 231 Units

Types of Units: 1 bedroom, 2 bedrooms, 2+1 bedrooms

Ceiling Height: Approx. 3.00 m in primary spaces
Approx. 3.15 m in primary spaces
for selected high zone units from 21st Floor

Common Facilities: Ground floor covered residents drop-off with landscape garden
Double volume height lobby with outdoor patio*
Crown level wellness facilities with panoramic city views

- Infinity edge non-chlorine filtration system sky pool with children's pool
- Sky deck with Sunset Pavillion
- Approx. 200 sqm. Functional fitness centre with training studio
- Approx. 60 sqm. Amphitheater lounge
- Separated male & female steam room
- Study room with garden view
- Multi-function area
- Sky terrace

Wi-Fi hotspot
CCTV with 24 hours security monitoring system*
Floor specific access card system
Pet-friendly zone*
Electric Vehicle Charging Stations*

Services: Concierge*

Parking: Approx. 211 conventional carpark lots*

Common Area Maintenance Fee: 110 Baht/ sqm (payable 12 months in advance)

Sinking Fund: 900 Baht/ sqm (One time payment upon ownership transfer)

Construction Commencement: Q2 2019

Expected Completion: Q3 2023 (approx.)



* Note : Project: Tait Sathorn 12 | Location: Land Title Deed No. 5951, 5952, 5375, 13562, 33781, 35915, 35916, 39524, 41090, 41091, 48958, Soi Sathorn 12, North-Sathorn Road, Silom, Bangrak, Bangkok | Project's Area: 1 Rai 3 Ngan 22.6 sq. wah (2,890.4 sq.m.) | Type of Building: A 39-storey residential condominium building (2 basements) with a total of 231 units | Construction Permit No. Yor Phor 4 No. 24/2563 | Construction Starts: Q1 (AD 2020) | Expected Completion: Q3 (AD 2023) | Encumbrance on Land and Building: The Land and Building are under mortgaged with the bank | Project Owner: Raimon Land Sathorn Co., Ltd. | Head Office: No.3 Rajanakarn Building, 19th floor, South-Sathorn Road, Yannawa Sub-district, Bangkok 10120 | Registered Capital: 547,370,000 Baht (fully paid-up) | The completed building will be registered as a condominium under the laws on condominium upon completion thereof | All unit co-owners shall have duty to pay sinking fund, common area maintenance fee, taxes (if any) and expenses as provided under the laws on condominium.



LIVE THE ICONIC LIFE

02 029 1888

RAIMONLAND.COM



Project: Tait Sathorn 12 | Location: Land Title Deed No. 5951, 5952, 5375, 13562, 33781, 35915, 35916, 39524, 41090, 41091, 48958, Soi Sathorn 12, North-Sathorn Road, Silom, Bangrak, Bangkok | Project's Area: 1 Rai 3 Ngan 22.6 sq. wah (2,890.4 sq.m.) | Type of Building: A 39-storey residential condominium building (2 basements) with a total of 231 units | Construction Permit No. Yor Phor 4 No. 24/2563 | Construction Starts: Q1 (AD 2020) | Expected Completion: Q3 (AD 2023) | Encumbrance on Land and Building: The Land and Building are under mortgaged with the bank | Project Owner: Raimon Land Sathorn Co., Ltd. | Head Office: No.3 Rajanakarn Building, 19th floor, South-Sathorn Road, Yannawa Sub-district, Bangkok 10120 | Registered Capital: 547,370,000 Baht (fully paid-up) | The completed building will be registered as a condominium under the laws on condominium upon completion thereof | All unit co-owners shall have duty to pay sinking fund, common area maintenance fee, taxes (if any) and expenses as provided under the laws on condominium.