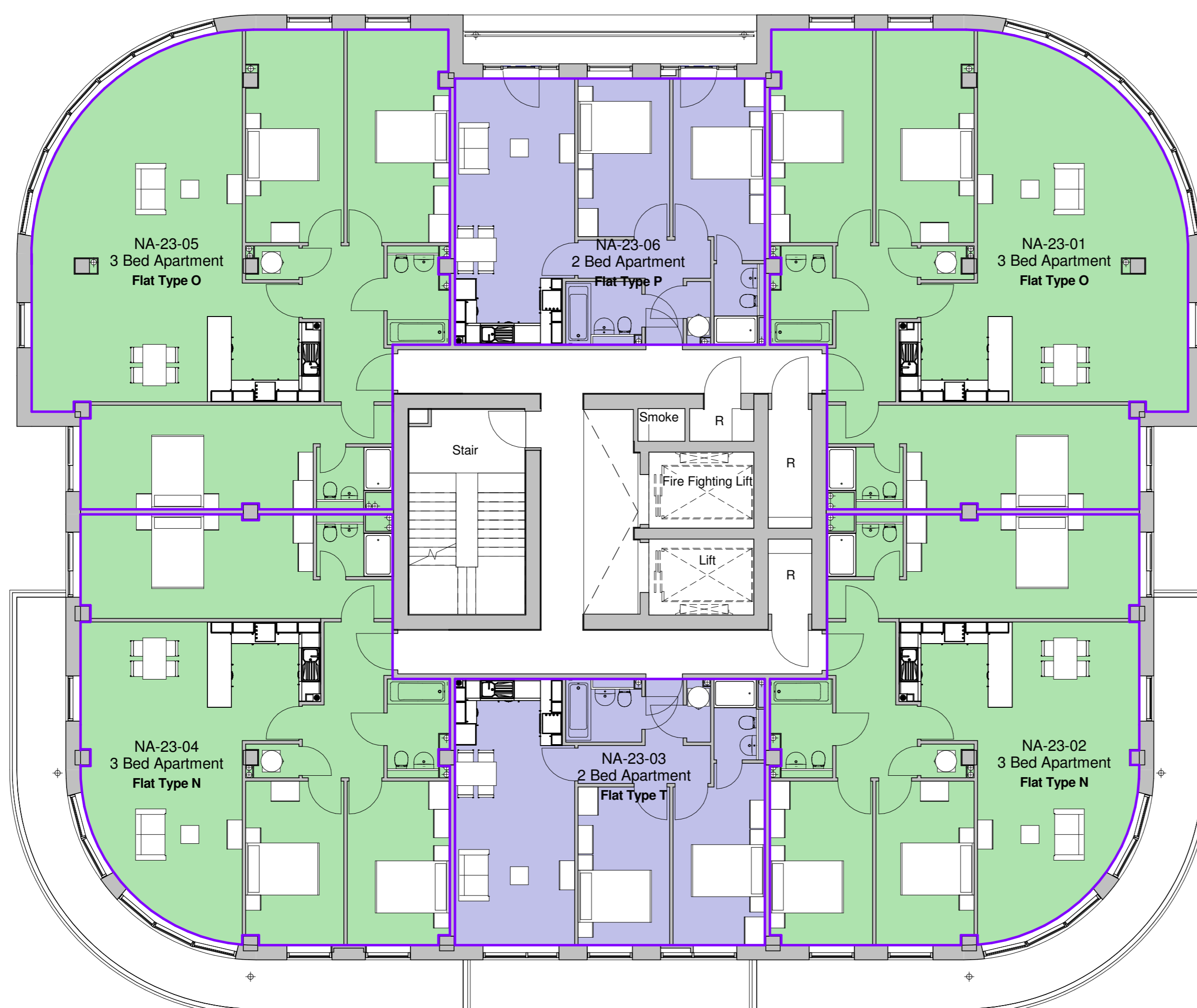


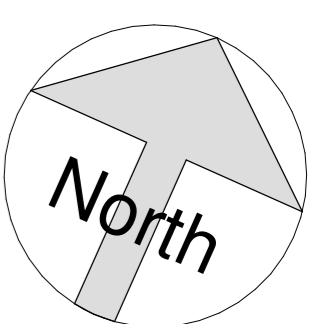
**Level 24**  
1 : 100

Area Schedule Level 24							
Level	Name	No.	Flat Type	Area (m <sup>2</sup> )	Area (ft <sup>2</sup> )	En-suite	Balcony
Lv 24	3 Bed Apartment	NA-24-01	Flat Type O	133 m <sup>2</sup>	1436 ft <sup>2</sup>	1 no en-suite	No
Lv 24	3 Bed Apartment	NA-24-02	Flat Type N	108 m <sup>2</sup>	1168 ft <sup>2</sup>	1 no en-suite	No
Lv 24	2 Bed Apartment	NA-24-03	Flat Type T	63 m <sup>2</sup>	678 ft <sup>2</sup>	1 no en-suite	No
Lv 24	3 Bed Apartment	NA-24-04	Flat Type N	108 m <sup>2</sup>	1168 ft <sup>2</sup>	1 no en-suite	No
Lv 24	3 Bed Apartment	NA-24-05	Flat Type O	133 m <sup>2</sup>	1436 ft <sup>2</sup>	1 no en-suite	No
Lv 24	2 Bed Apartment	NA-24-06	Flat Type P	63 m <sup>2</sup>	678 ft <sup>2</sup>	1 no en-suite	Yes



**Level 23**  
1 : 100

Area Schedule Level 23							
Level	Name	No.	Flat Type	Area (m <sup>2</sup> )	Area (ft <sup>2</sup> )	En-suite	Balcony
Lv 23	3 Bed Apartment	NA-23-01	Flat Type O	133 m <sup>2</sup>	1436 ft <sup>2</sup>	1 no en-suite	No
Lv 23	3 Bed Apartment	NA-23-02	Flat Type N	109 m <sup>2</sup>	1168 ft <sup>2</sup>	1 no en-suite	No
Lv 23	2 Bed Apartment	NA-23-03	Flat Type T	63 m <sup>2</sup>	678 ft <sup>2</sup>	1 no en-suite	No
Lv 23	3 Bed Apartment	NA-23-04	Flat Type N	108 m <sup>2</sup>	1168 ft <sup>2</sup>	1 no en-suite	No
Lv 23	3 Bed Apartment	NA-23-05	Flat Type O	133 m <sup>2</sup>	1436 ft <sup>2</sup>	1 no en-suite	No
Lv 23	2 Bed Apartment	NA-23-06	Flat Type P	63 m <sup>2</sup>	678 ft <sup>2</sup>	1 no en-suite	Yes



**BEAUMONT  
MORGAN**

Rev C1 : 2015.09.10 : MJH : PDM : Issued for construction.  
 Rev T1 : 2017.10.09 : PDM : BH : Issued for stage 1  
 Rev P8 : 2017.07.10 : PDM : BH : Flat Type P without balcony changed to type T  
 Rev P7 : 2017.07.10 : PDM : BH : Balconies removed from Flat Type O  
 Rev P6 : 2017.07.05 : PDM : BH : Building height reduced. Windows modified to suit & corner balconies removed.  
 Rev P5 : 2017.06.20 : PDM : BH : Layouts amended as Req. by BMD. Flat references added.  
 Rev P4 : 2017.06.05 : PDM : BH : North Point Added. Req. by BMD  
 Rev P3 : 2017.04.28 : PDM : BH : Furniture added and ensuite column added as BMD request  
 Rev P2 : 2017.04.12 : PDM : BH : Format amended and modifications as BMD comments  
 Rev P1 : 2017.01.30 : PDM : BH : Issued for stage 3 costs

**Issue Purpose : CONSTRUCTION**

P+HS Architects			<b>P+HS</b> architects
84 Albion Street Leeds LS1 6AG	The Old Station Station Road Stokesley TS9 7AB	Churchill House 12 Mosley Street Newcastle NE1 1DE	
0113 245 4332	01642 712684	0191 2308103	Do not scale from this drawing. Refer to listed dimensions, and any discrepancy to be reported to the Architect.
www.pandhs.co.uk	Refer to larger scale drawings where available. © P+HS Architects		
Client Beaumont Morgan	Issued From Stokesley	Date Jan 2017	
Project 2812 Northhill House Apartments, Fortis Quay	Scale As indicated @ A1	Drawn BL Auth PDM	
Title Area Schedule - Levels 23 & 24	Status	Revision	
<b>FQ - PHS - NA - ZZ - DR - A - 22-023</b>	<b>A</b>	<b>C1</b>	