



PAVILION WHARF

MANCHESTER

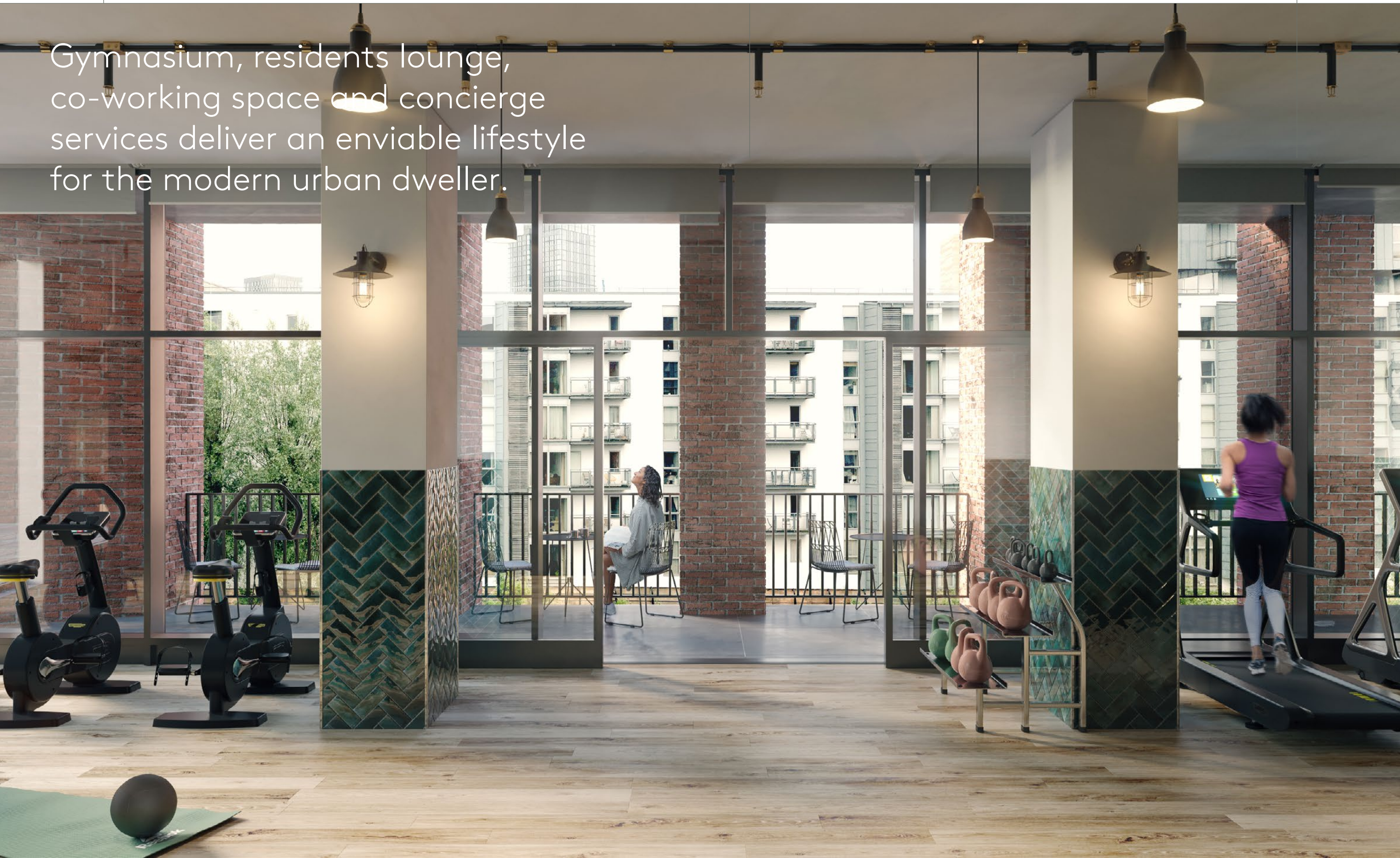


On-site amenities to enjoy city living



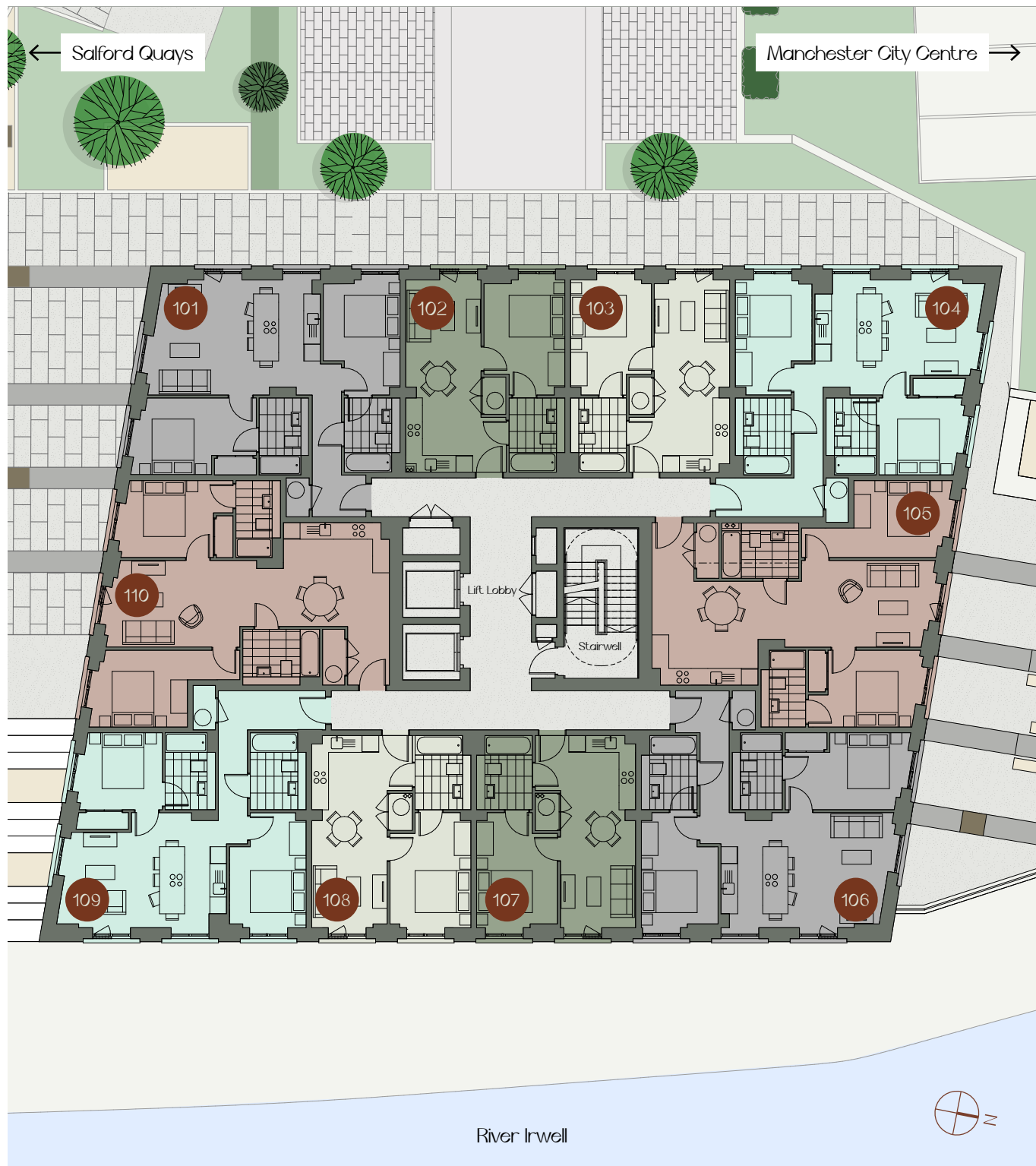
CGI of exterior view

Gymnasium, residents lounge,
co-working space and concierge
services deliver an enviable lifestyle
for the modern urban dweller.



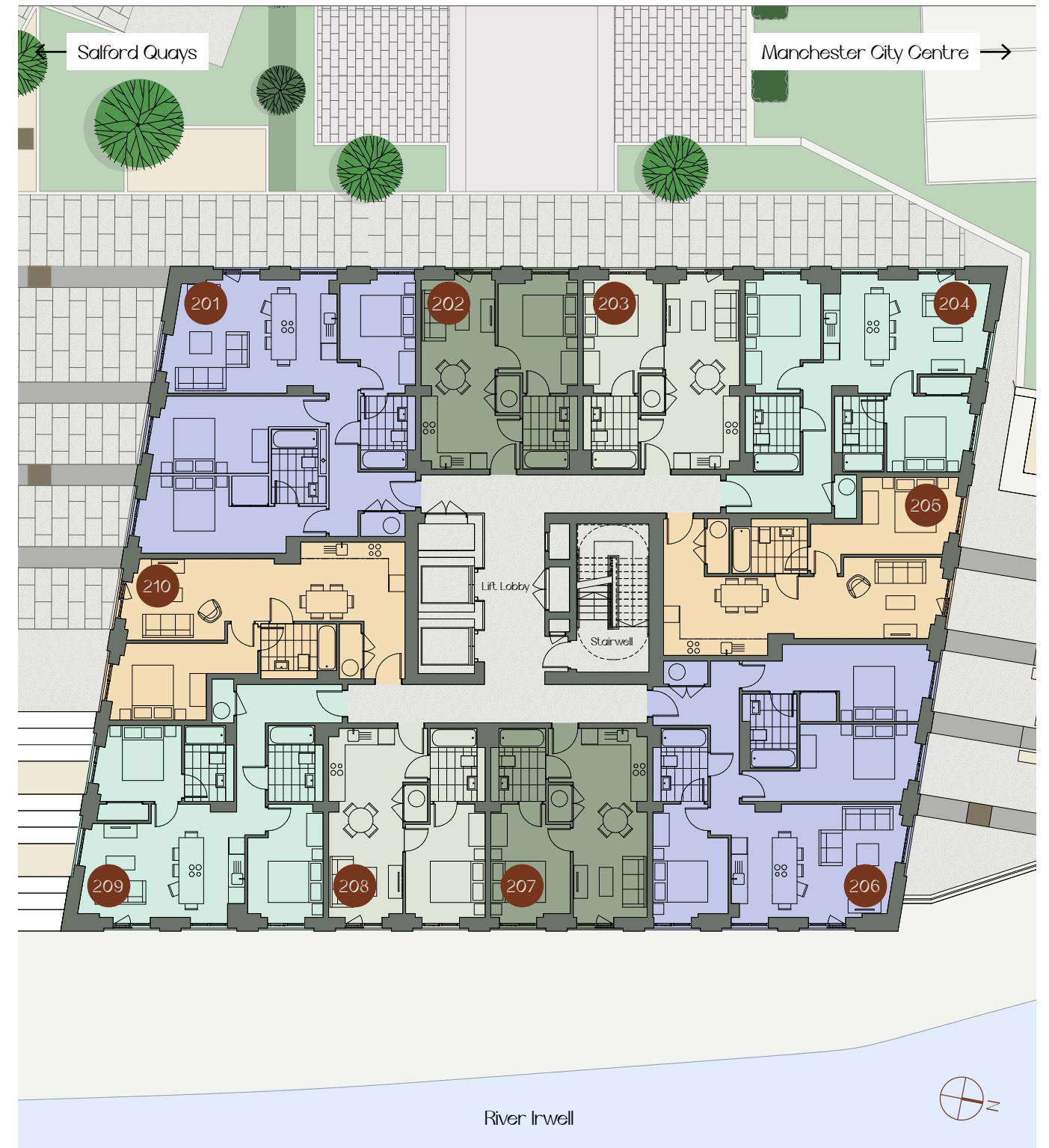
Levels 1 & 6-16

- 1 Bedroom Type A
- 1 Bedroom Type C
- 2 Bedroom Type A
- 2 Bedroom Type B
- 2 Bedroom Type C



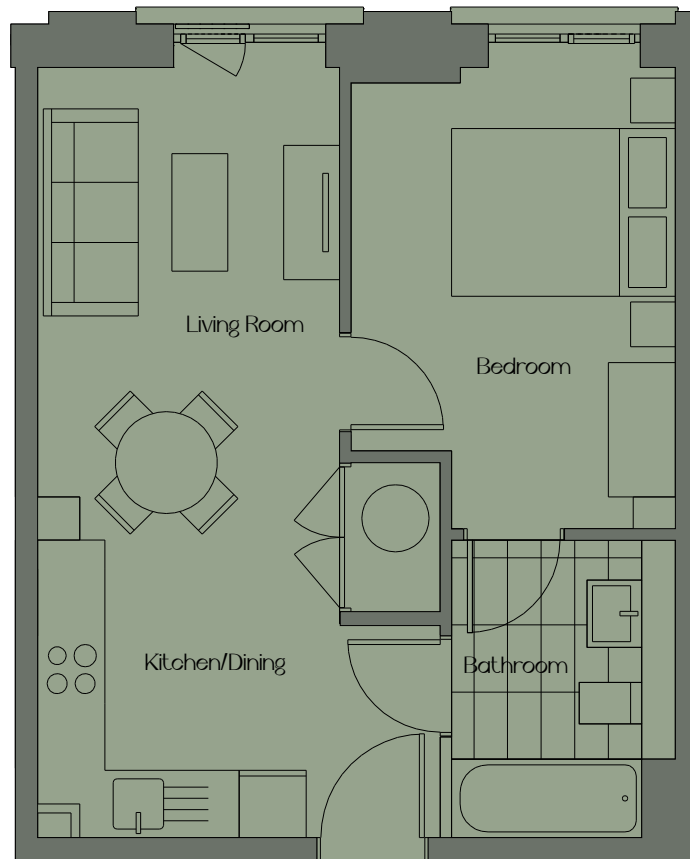
Levels 2-5

- 1 Bedroom Type A
- 1 Bedroom Type B
- 1 Bedroom Type C
- 2 Bedroom Type C
- 3 Bedroom Type A



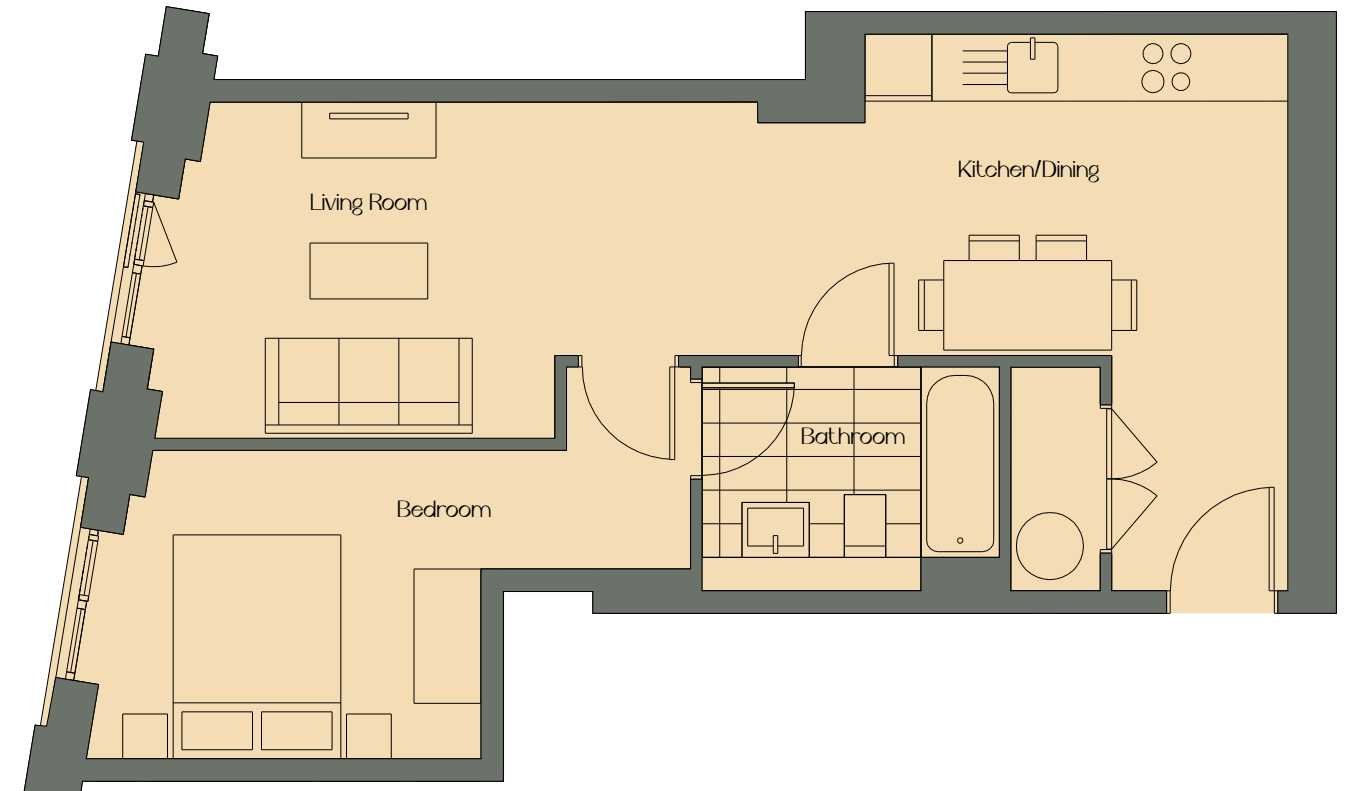
1 Bedroom Apartment
 Type A
 424 sq ft

	Sq ft
Kitchen/Dining/Living Room	9 x 23
Bedroom	10 x 14
Bathroom	7 x 9



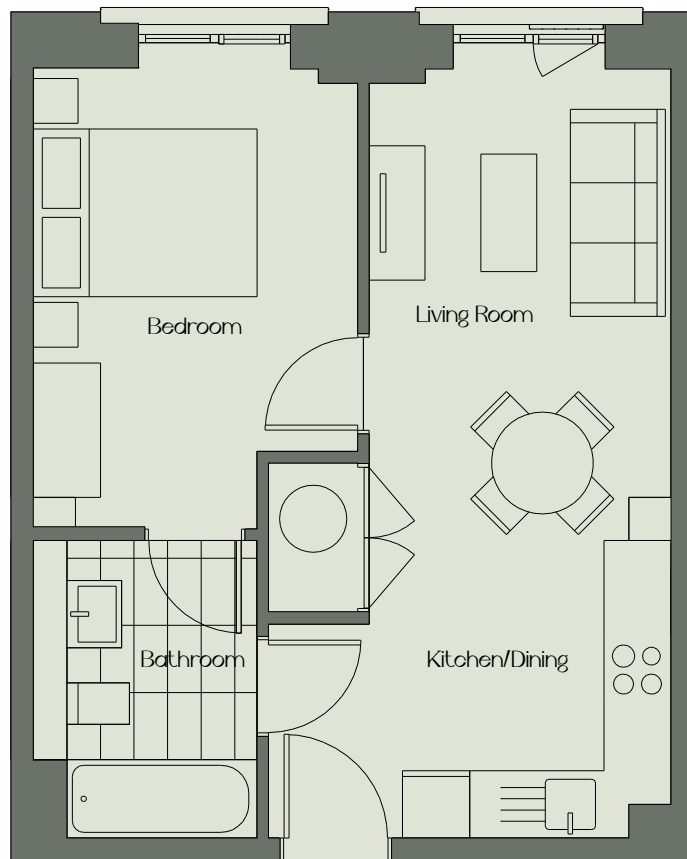
1 Bedroom Apartment
 Type B
 555 sq ft

	Sq ft
Kitchen/Dining	16 x 9
Living Room	17 x 10
Bedroom	11 x 9
Bathroom	9 x 7



1 Bedroom Apartment
 Type C
 424 sq ft

	Sq ft
Kitchen/Dining/Living Room	9 x 23
Bedroom	10 x 14
Bathroom	7 x 9



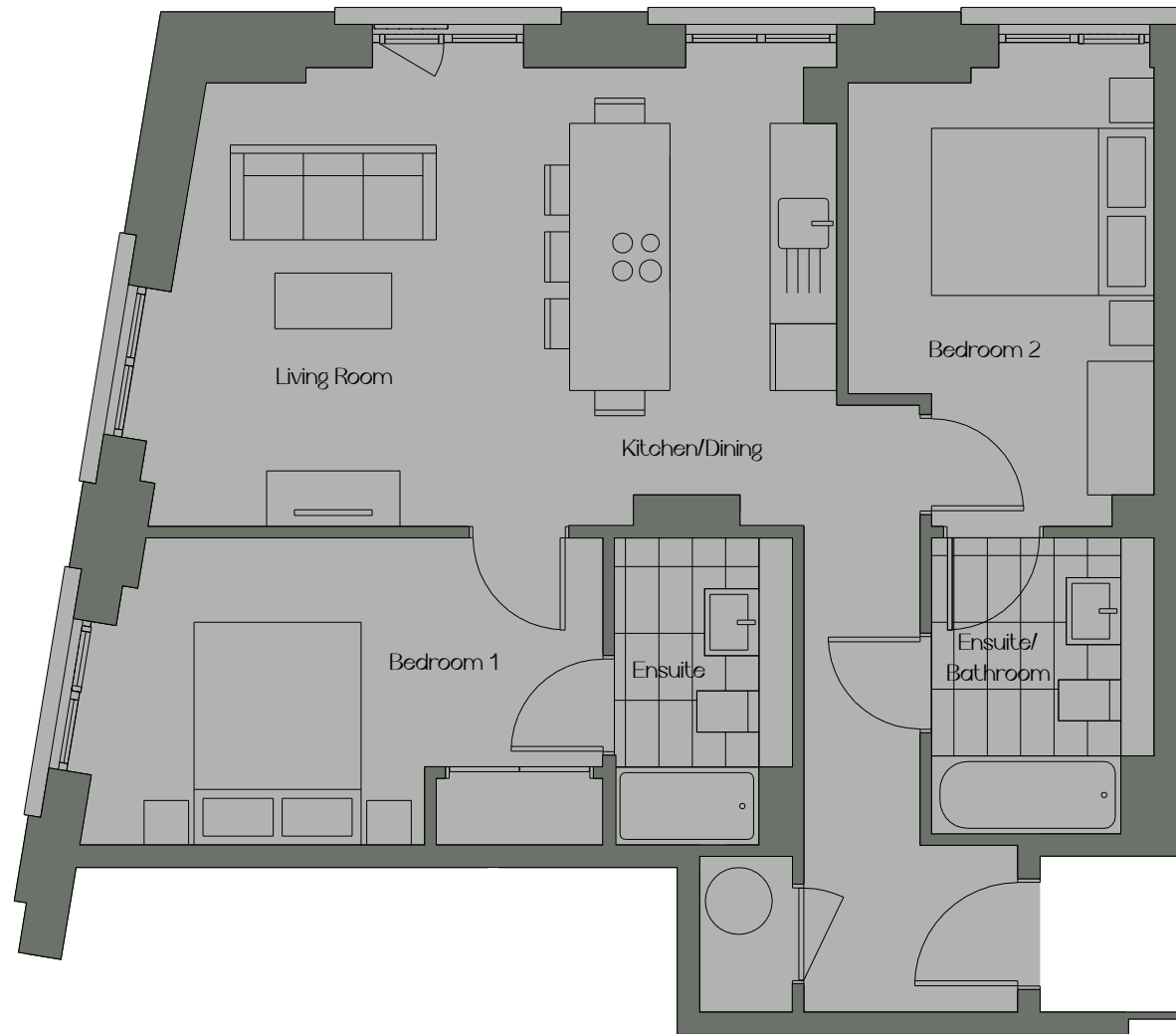
2 Bedroom Apartment
 Type A
 776 sq ft

	Sq ft
Living Room	20 x 10
Kitchen/Dining	12 x 12
Bedroom 1	11 x 9
Ensuite	5 x 9
Bedroom 2	11 x 9
Bathroom	9 x 7



2 Bedroom Apartment
 Type B
 737 sq ft

	Sq ft
Kitchen/Dining/Living Room	20 x 14
Bedroom 1	15 x 9
Ensuite	5 x 9
Bedroom 2	9 x 14
Ensuite/Bathroom	7 x 9



2 Bedroom Apartment
 Type C
 718 sq ft

	Sq ft
Kitchen/Dining/Living Room	19 x 14
Bedroom 1	10 x 9
Ensuite	5 x 9
Bedroom 2	9 x 14
Bathroom	7 x 9



3 Bedroom Apartment

Type A

975 sq ft

	Sq ft
Kitchen/Dining/Living Room	20 x 14
Bedroom 1	22 x 9
Ensuite	7 x 9
Bedroom 2	13 x 9
Bedroom 3	9 x 14
Bathroom	7 x 9



PAVILION WHARF

MANCHESTER

PAVILIONWHARFMCR.COM

Misrepresentation Act: Forshaw for themselves and for the vendors or lessors of this property, whose agents they are give notice that: a) all particulars are set out as general outline only for the guidance of intending purchasers or lessees, and do not comprise part of an offer or contract: b) all descriptions, dimensions, references to condition and necessary permissions for use and occupation, and other details are given in good faith and are believe to be correct but any intending purchasers or tenants should not rely on them as statements or representations of fact but must satisfy themselves by inspection or otherwise as to the correctness of each of them. c) no person in the employment of Forshaw has any authority to make any representation of warranty whatsoever in relation to this property.